

**ENVIR****LUME**<sup>™</sup>  
Lighting & Décor for Every Environment

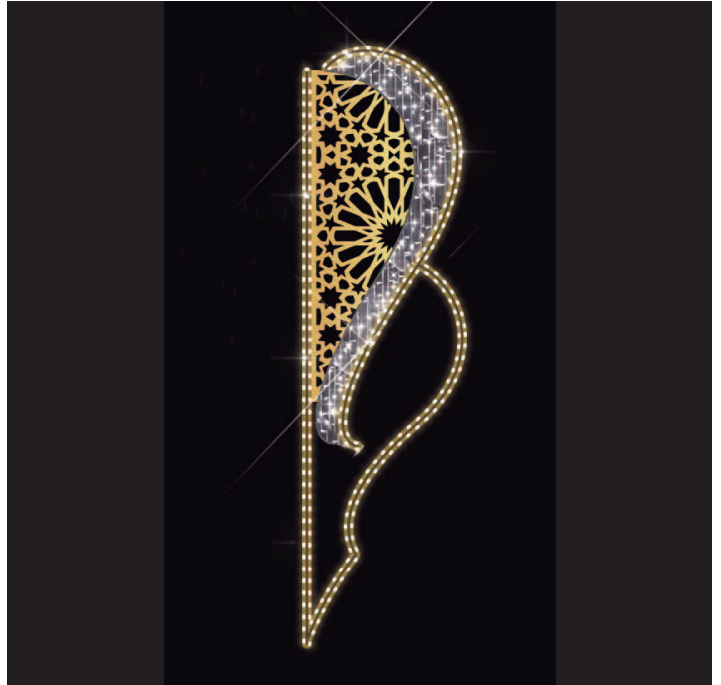
RAMADAN CATALOG  
2024



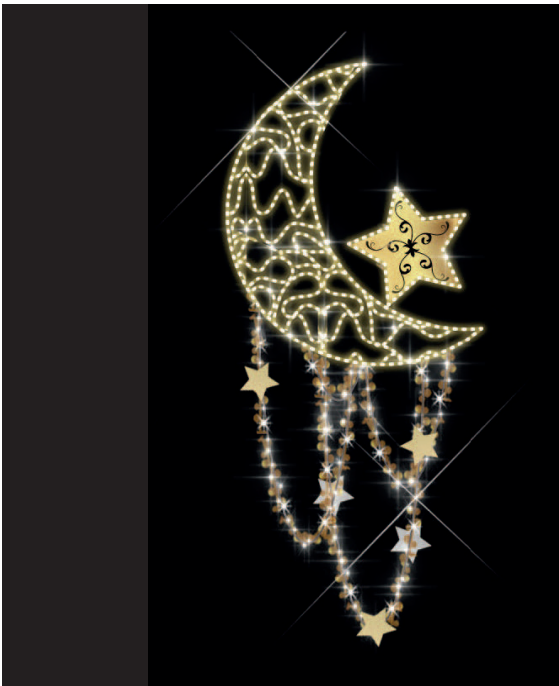
WINDING STARS  
ECP-0249300 | 7.2' H x 2.7' W | POLE MOUNT



MANDALA SCROLL  
ECP-0249301 | 7.2' H x 2.1' W | POLE MOUNT



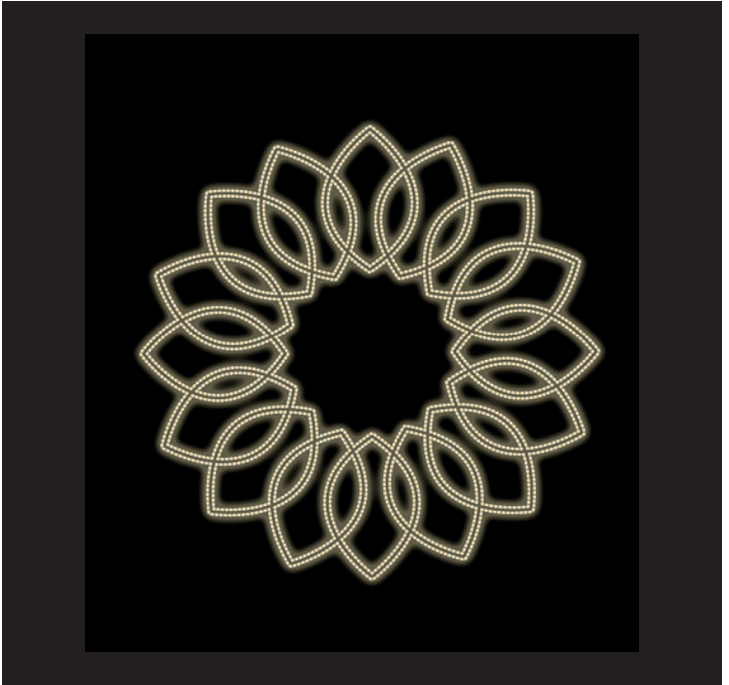
CRESCENT MOON & STAR  
ECP-0249302 | 7.2' H x 2.1' W | POLE MOUNT



RAMADAN STARS  
ECP-0249303 | 7.2' H x 2' W | POLE MOUNT



SEED OF LIFE MANDALA  
ECP-0249304 | 6.6' H x 6.6' W



LOTUS FLOWER MANDALA  
ECP-0249305 | 6.6' H x 6.6' W



ABSTRACT MANDALA  
ECP-0249306 | 6.6' H x 6.6' W



PENCIL FLORAL ROUND MANDALA  
ECP-0249307 | 6.6' H x 6.6' W



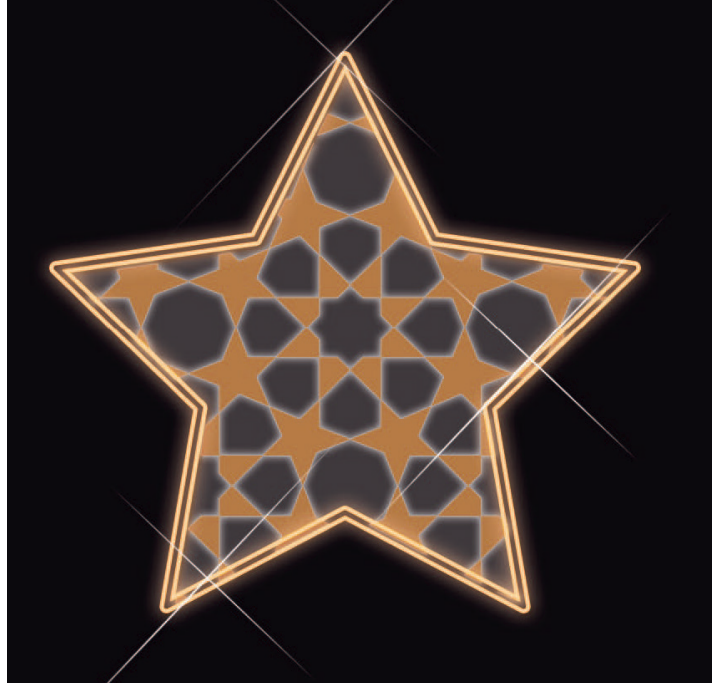
# ENVIROLUME™

Lighting & Décor for Every Environment

PAISLEY CRESCENT MOON  
ECP-0249308 | 4.9' H x 4.9' W



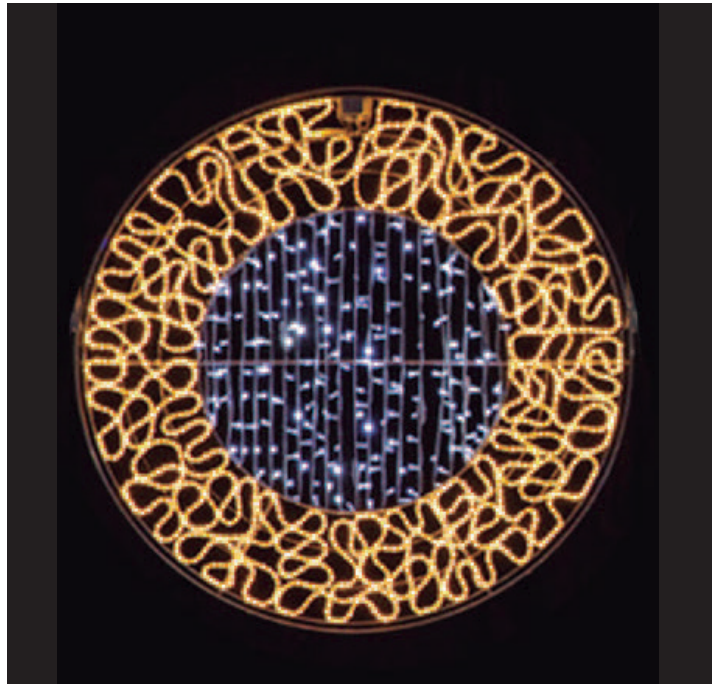
LEOPARD STAR  
ECP-0249309 | 4.9' H x 4.9' W



MODERN CRESCENT MOON  
ECP-0249310 | 7.2' H x 3.3' W



WREATH MANDALA  
ECP-0249311 | 6.6' H x 6.6' W



STARRY NIGHT OVERHEAD  
ECP-0249312 | 4.9' H x 19.7' W



CRESCENT MOON GATEWAY  
ECP-0249000 | 7.2' H x 5.2' W



CRESCENT MOON PHOTO OP  
ECP-0249313 | 14.8' H x 17.4' W X 6.6' D



# ENVIROLUME™

Lighting & Décor for Every Environment

3D RED STAR  
ECP-0249314 | 9.8' H x 9.8' W



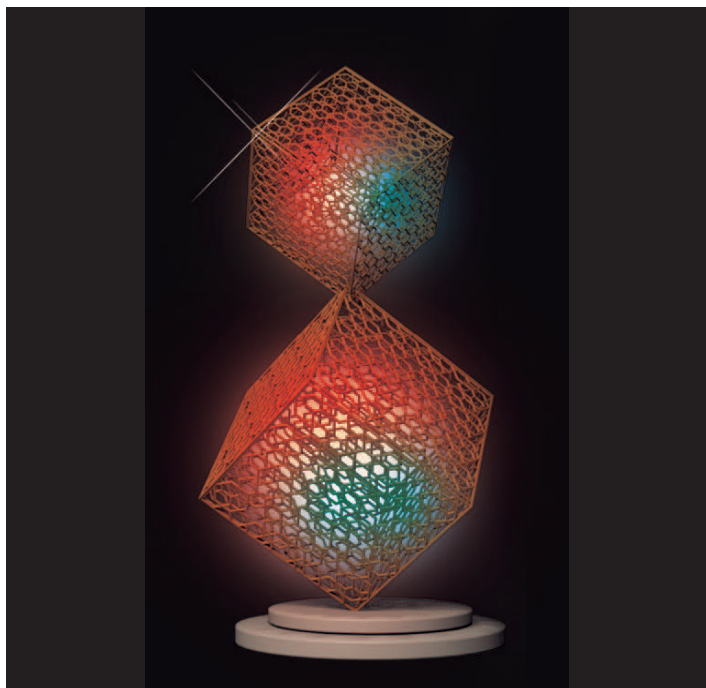
CRESCENT MOON & STARS (INDOOR USE ONLY)  
ECP-0249315 | 13.1' H x 6.6' W



3 CUBE STACK  
ECP-0249316 | 9.8' H x 3.3' W



BALANCING CUBES  
ECP-0249317 | 9.8' H x 3.3' W



# WARRANTY

Envirolume is committed to providing quality Christmas Lighting and Commercial Christmas Decorations!

## **Seasonal Use Products**

Seasonal decorative lighting products are intended to be on display for up to ninety (90) days. All products should be inspected prior to use to ensure they are in intended working condition and then removed and stored properly to maximize product life and usability. Use of seasonal products for periods greater than ninety (90) consecutive days may contribute to excessive wear which can reduce the overall product life.

## **Indoor and Outdoor Rated Products**

Indoor use products are not intended for use in environments of weather, moisture, exposure to the sun, elements and excessive temperature changes. Weather resistant outdoor rated products can safely be used both indoors or outdoors. Outdoor rated products should be protected from direct exposure to moisture to include rain and irrigation systems.

## **Warranty Policy**

Warranties on Envirolume products vary by product. Refer to the product class for warranty specifications. Product misuse will void all warranties. Envirolume is committed to protecting its clients interests and will replace or credit product purchases that fail to meet product warranty standards.

We warranty to the original purchaser that at the time of purchase, Envirolume products will be free from manufacturer's defects when used as intended. This protection is extended for three (3) years on metal framing, three (3) seasons on garland products and components, two (2) seasons on electrical wiring, and one (1) season on all computerized lighting components, light bulbs, light strands, installation hardware and décor components not specifically listed while used under normal conditions. Pole mounted displays are designed to withstand winds up to 60 mph with no ice load. Obligation under this warranty is limited to repairing or replacing any part or product determined by Envirolume to be defective.

All items not specifically listed in the classes listed above are covered by a sixty (60) day warranty. Product that has been altered in any way is not eligible for warranty. The warranty applies to product only and does not extend to any costs incurred for shipping or installation and removal labor. Shipping is not included in this, or any warranty. Under this warranty, the company's obligation to repair or replace is on a non pro-rated basis. Labor to install and the cost of shipping are not included in this warranty and are expressly in lieu of all other warranties expressed or implied. Bulb burnouts or electrical damage caused by the buyer, weather, or handling in transit are not covered under this warranty. All merchandise is carefully inspected prior to shipping.

## **Return Policy**

Any returned products under the following condition will be subjected to a 20% restocking fee. Freight charges are the responsibility of the purchaser. Product returns will not be accepted without prior written authorization. Return requests will be accepted for credit if submitted and approved within thirty (30) days of receipt of product. No returns will be accepted after December 15th.



1310 W. Laurel San Antonio, TX 78201  
DecorIQ.com 210.667.3603



**ALL RIGHTS RESERVED**

The designs included in this catalog are protected by industry property law. This document is not contractual.  
Dimensions and other technical data of the products are provided for information purposes only and are subject to change for technical reasons or due to publication errors.  
The partial or total reproduction of the contents of this publication is forbidden without the express written authorization of DecorIQ.