

ENVIR^{OL}LUME[™]
Lighting & Décor for Every Environment

PIRATE WORLD CATALOG
2024





LED PIRATE SHIP
ECP-0249701



LED LIGHTHOUSE
ECP-0249702



LED ANCHOR
ECP-0249703

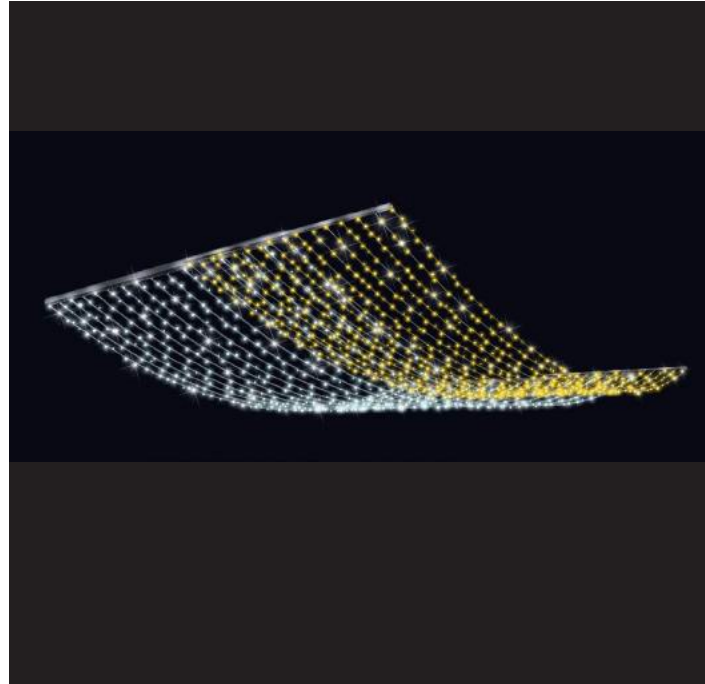


LED SHIP'S WHEEL
ECP-0249704

LED MINI SAILBOAT
ECP-0249705



INTERACTIVE SHIP'S WHEEL
ECP-0249706



FISHING NET
ECP-0249707



GIANT JELLYFISH
ECP-0249709



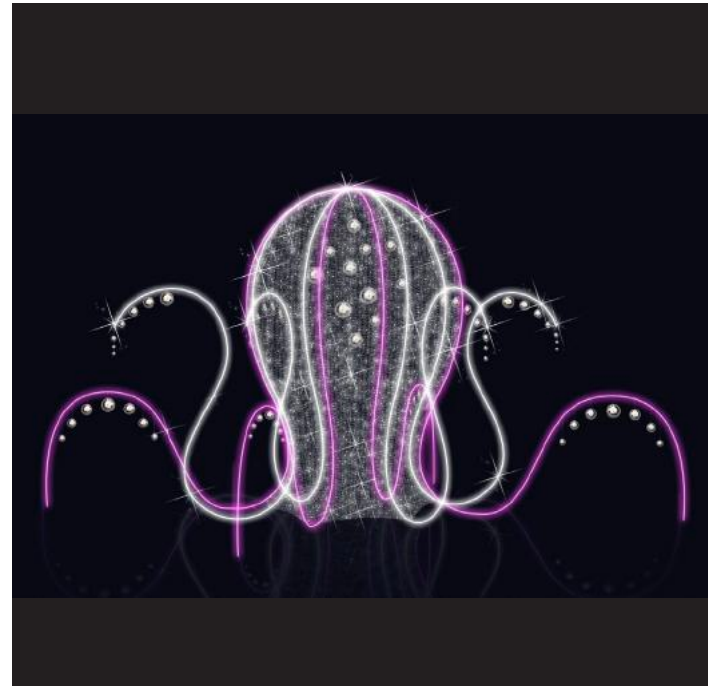
SWIMMING WHALE
ECP-0249708



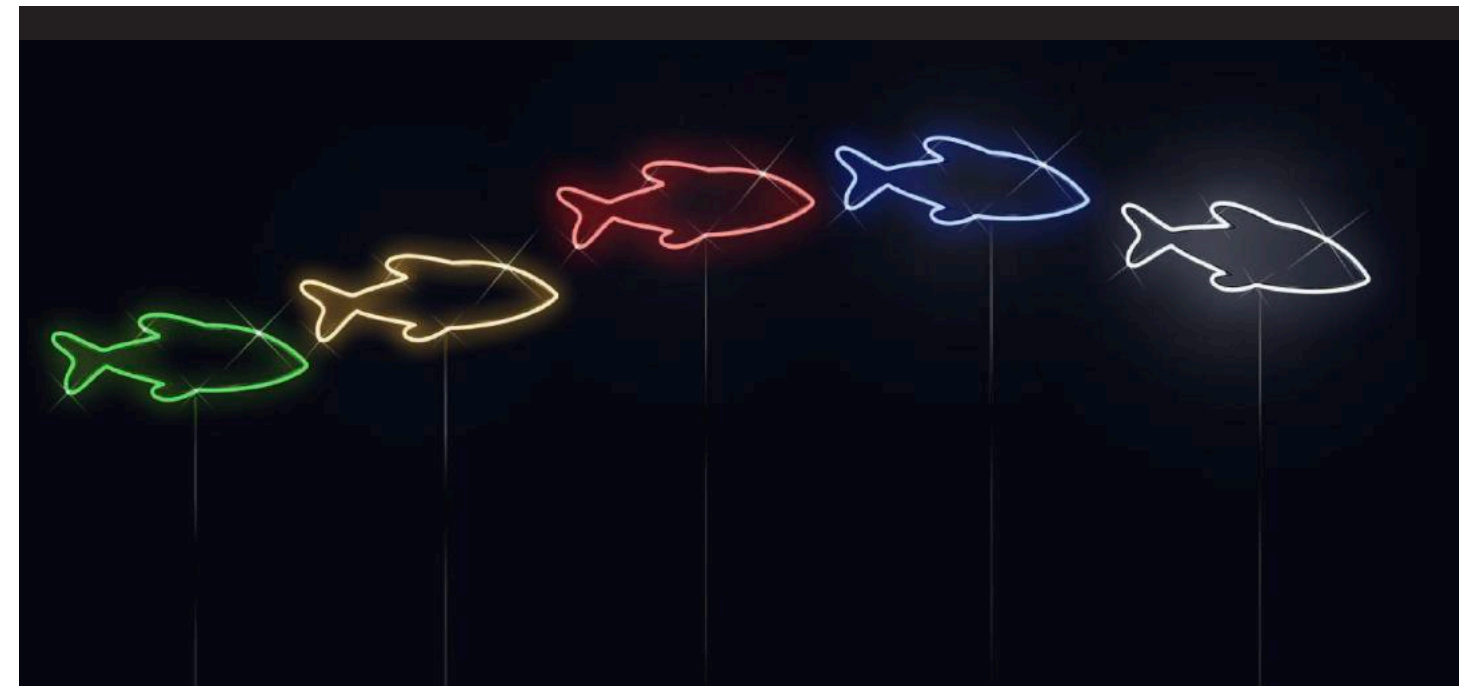
SMALL JELLYFISH
ECP-0249710



SHARK PHOTO OP
ECP-0249711



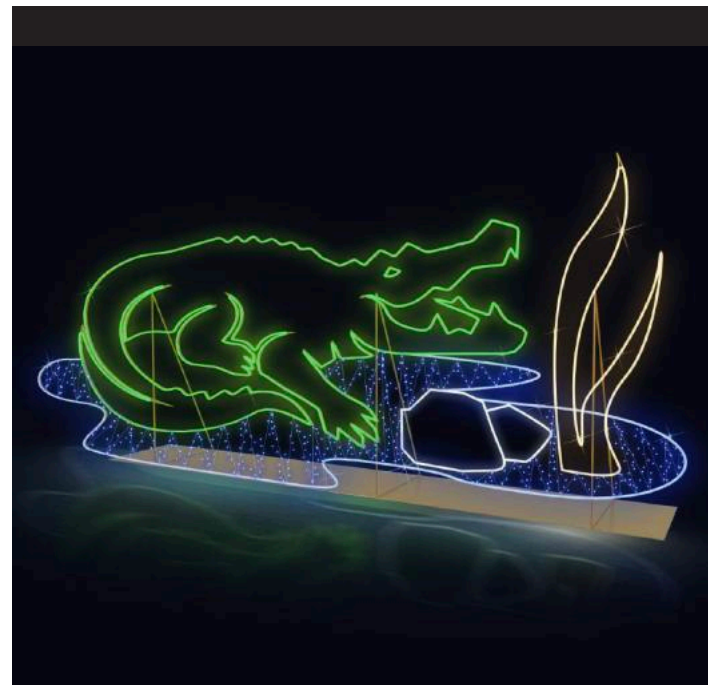
GIANT OCTOPUS
ECP-0249712



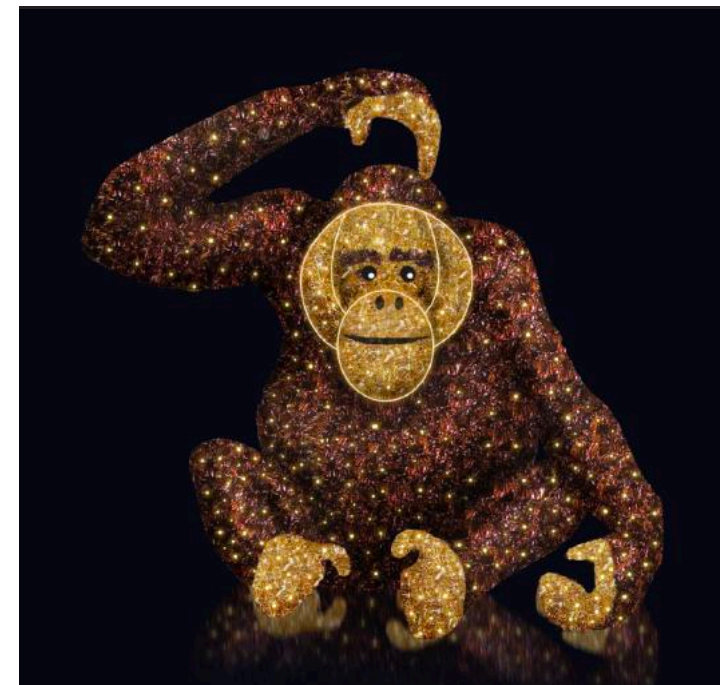
SCHOOL OF FISH
ECP-0249715



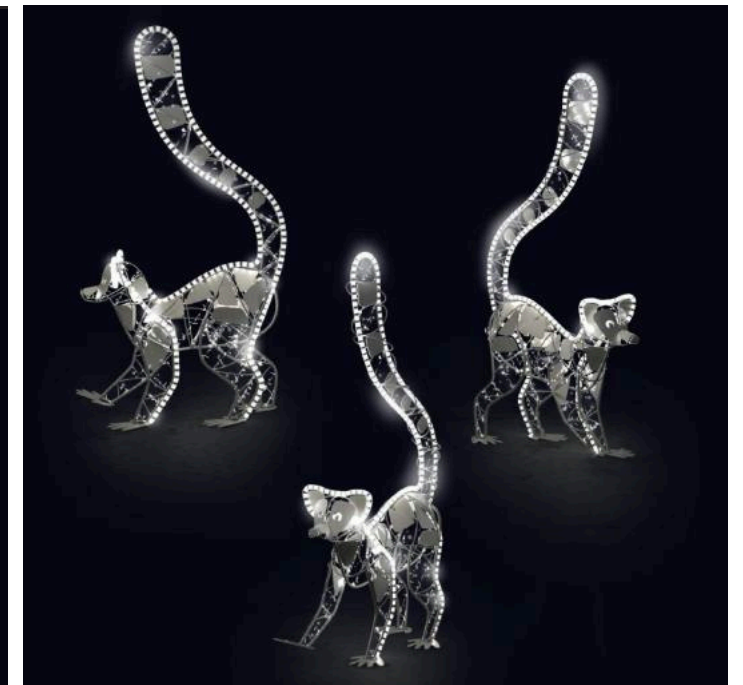
SEA CRAB
ECP-0249713



CROCODILE
ECP-0249714



ORANGUTAN
ECP-0249716



LEMURS
ECP-0249717



PLAYFUL MONKEYS
ECP-0249718



GOLDEN GORILLA
ECP-0249719



SIMPLE SEAGULL
ECP-0249722



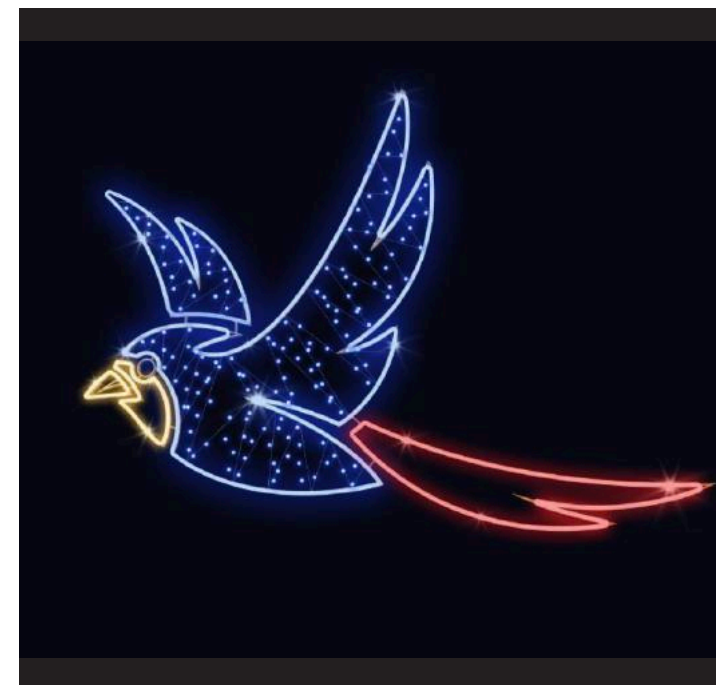
SPECKLED SEAGULL
ECP-0249721



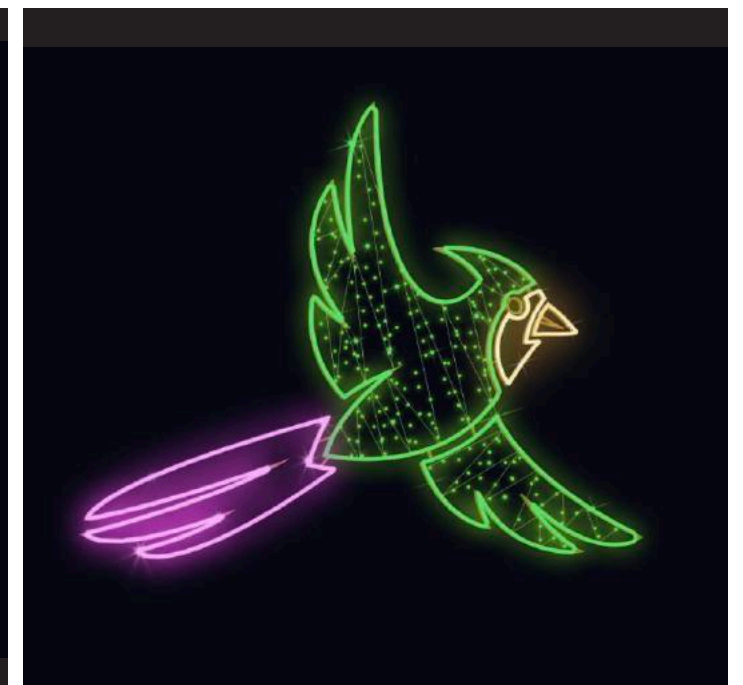
SILVERBACK GORILLA
ECP-0249720



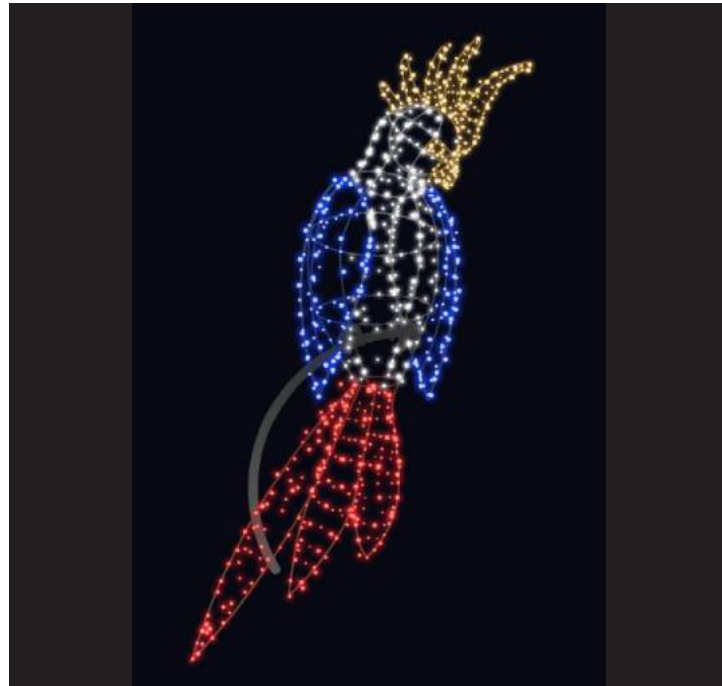
SPECKLED SEAGULL
ECP-0249721



BLUE PARROT
ECP-0249722



GREEN PARROT
ECP-0249723



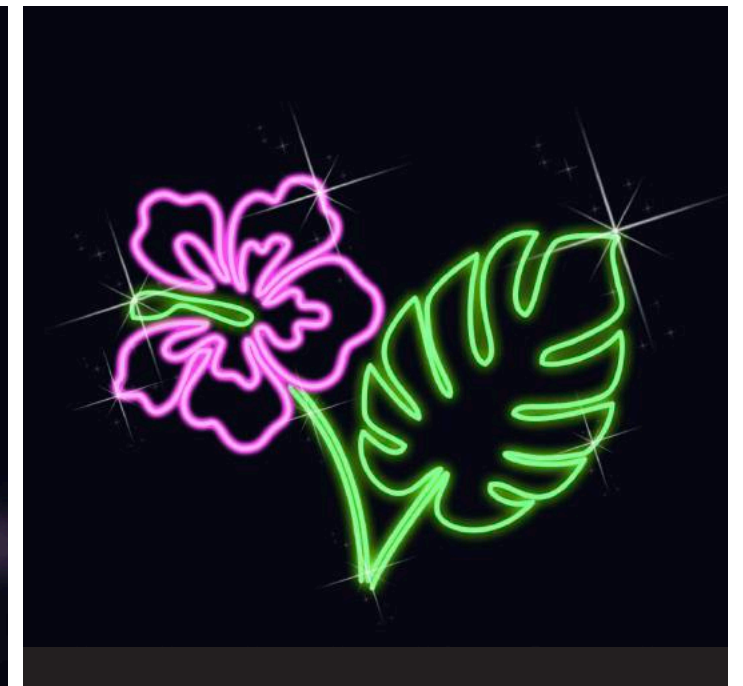
COLORFUL PARROT
ECP-0249724



TROPICAL PARROT
ECP-0249725



NEON BUTTERFLIES
ECP-0249728

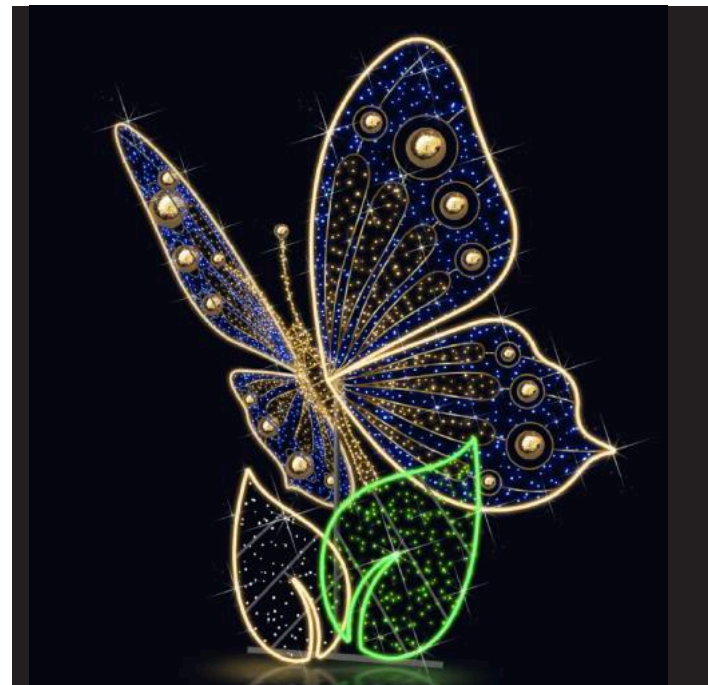


NEON HIBISCUS
ECP-0249729



LARGE GREEN BUTTERFLY
ECP-0249726-LG

SMALL GREEN BUTTERFLY
ECP-0249726-SM



ELEGANT BUTTERFLY
ECP-0249727



TROPICAL PALM TREE SEAT
ECP-0249730



LILY PALMS
ECP-0249731



PIRATE BRIDE
ECP-0249732



PEGLEG PIRATE
ECP-0249733



PIRATE MIRROR
ECP-0249736



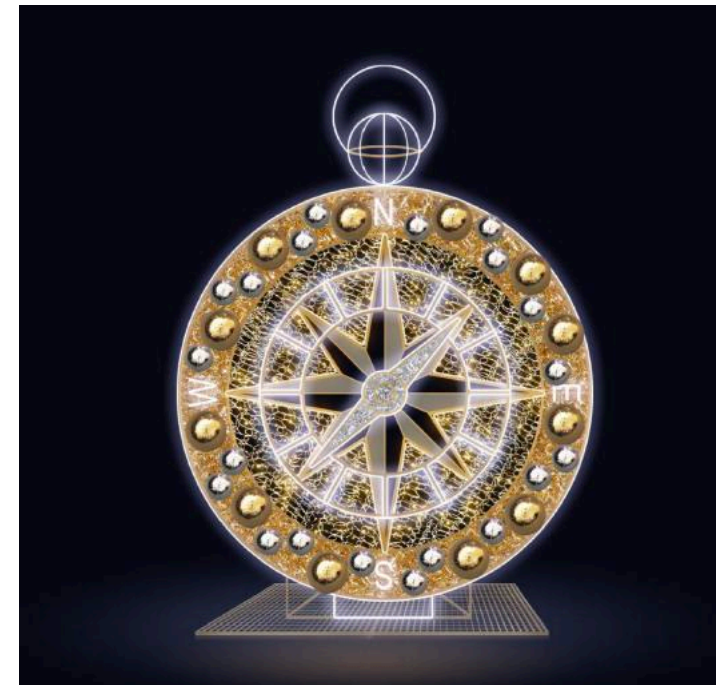
WALK THROUGH TREASURE CHEST
ECP-0249737



CROSSED CUTLASSES PHOTO OP
ECP-0249734



CUTLASSES & SKULL PHOTO OP
ECP-0249735



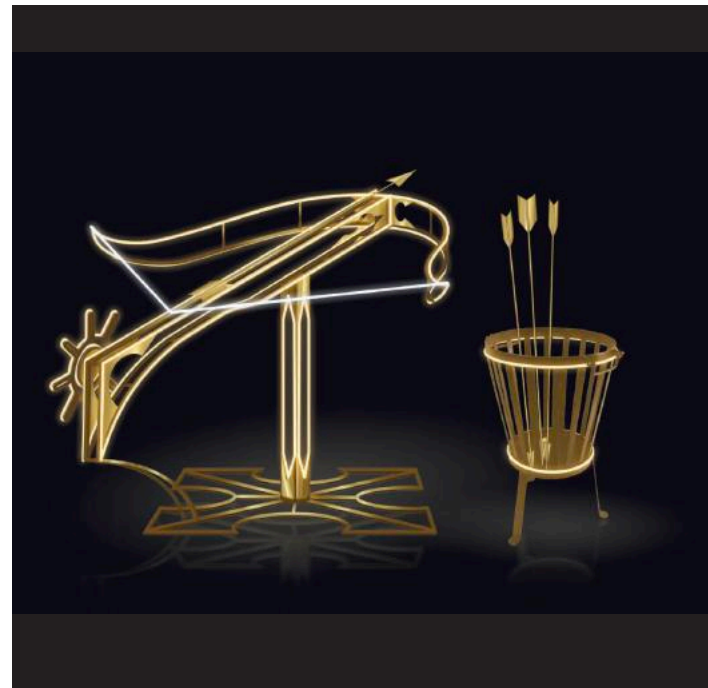
COMPASS
ECP-0249738



RUM KEG
ECP-0249739



CANNON
ECP-0249740



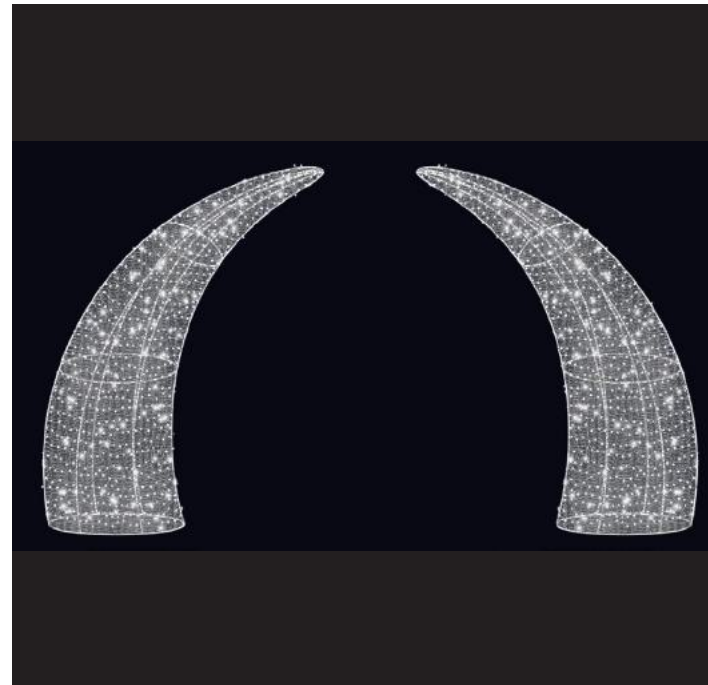
CROSSBOW
ECP-0249741



GOLDEN SPIDER
ECP-0249744



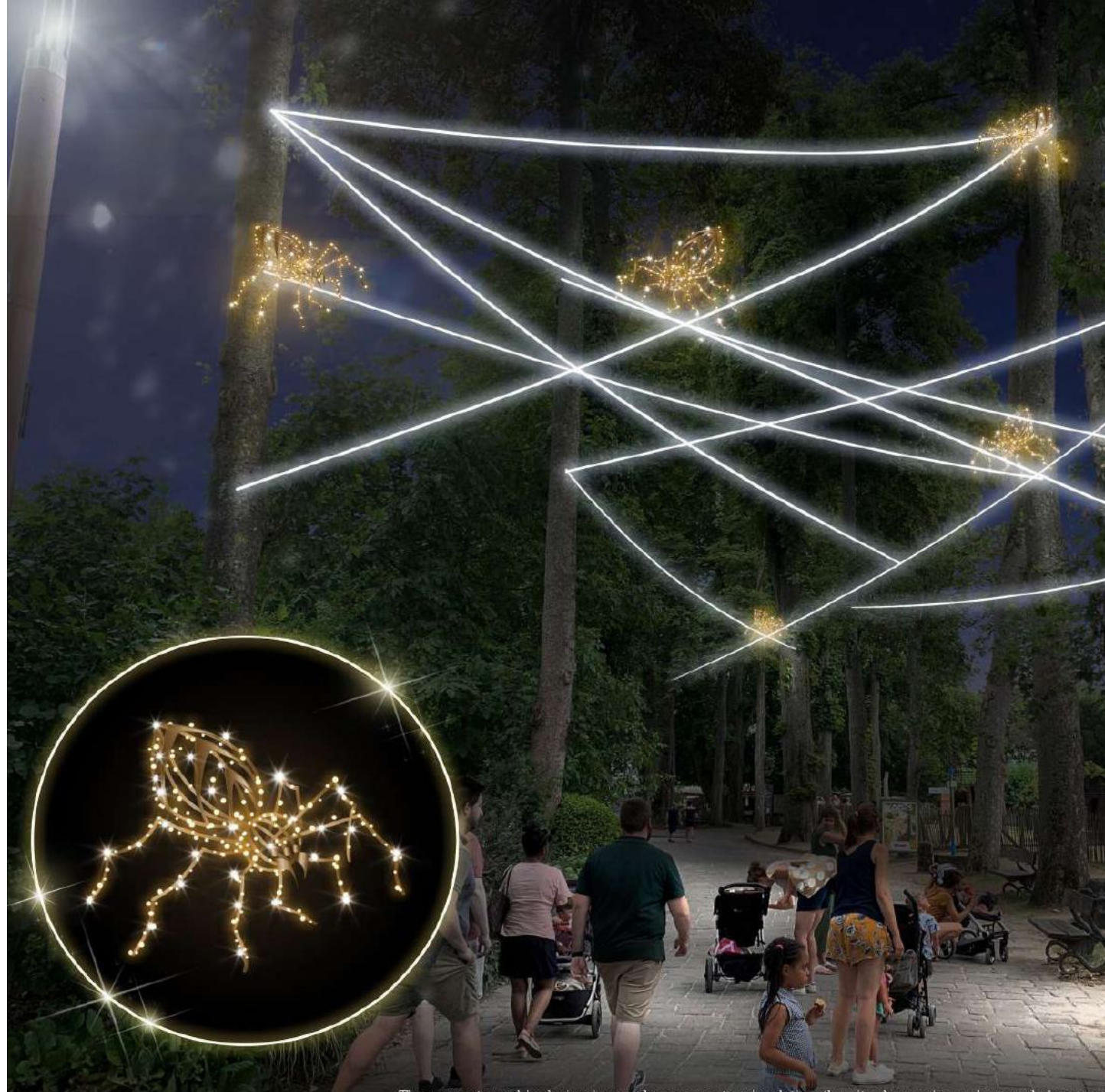
SKULL PHOTO OPP
ECP-0249742



TUSK GATE
ECP-0249743



SILVER SPIDER
ECP-0249745



LITTLE GOLD SPIDER
ECP-0249746



GOLDEN PET SPIDER
ECP-0249747



SILVER PET SPIDER
ECP-0249748



SCARY SPIDER
ECP-0249749

WARRANTY

Envirolume is committed to providing quality Christmas Lighting and Commercial Christmas Decorations!

Seasonal Use Products

Seasonal decorative lighting products are intended to be on display for up to ninety (90) days. All products should be inspected prior to use to ensure they are in intended working condition and then removed and stored properly to maximize product life and usability. Use of seasonal products for periods greater than ninety (90) consecutive days may contribute to excessive wear which can reduce the overall product life.

Indoor and Outdoor Rated Products

Indoor use products are not intended for use in environments of weather, moisture, exposure to the sun, elements and excessive temperature changes. Weather resistant outdoor rated products can safely be used both indoors or outdoors. Outdoor rated products should be protected from direct exposure to moisture to include rain and irrigation systems.

Warranty Policy

Warranties on Envirolume products vary by product. Refer to the product class for warranty specifications. Product misuse will void all warranties. Envirolume is committed to protecting its clients interests and will replace or credit product purchases that fail to meet product warranty standards.

We warranty to the original purchaser that at the time of purchase, Envirolume products will be free from manufacturer's defects when used as intended. This protection is extended for three (3) years on metal framing, three (3) seasons on garland products and components, two (2) seasons on electrical wiring, and one (1) season on all computerized lighting components, light bulbs, light strands, installation hardware and décor components not specifically listed while used under normal conditions. Pole mounted displays are designed to withstand winds up to 60 mph with no ice load. Obligation under this warranty is limited to repairing or replacing any part or product determined by Envirolume to be defective.

All items not specifically listed in the classes listed above are covered by a sixty (60) day warranty. Product that has been altered in any way is not eligible for warranty. The warranty applies to product only and does not extend to any costs incurred for shipping or installation and removal labor. Shipping is not included in this, or any warranty. Under this warranty, the company's obligation to repair or replace is on a non pro-rated basis. Labor to install and the cost of shipping are not included in this warranty and are expressly in lieu of all other warranties expressed or implied. Bulb burnouts or electrical damage caused by the buyer, weather, or handling in transit are not covered under this warranty. All merchandise is carefully inspected prior to shipping.

Return Policy

Any returned products under the following condition will be subjected to a 20% restocking fee. Freight charges are the responsibility of the purchaser. Product returns will not be accepted without prior written authorization. Return requests will be accepted for credit if submitted and approved within thirty (30) days of receipt of product. No returns will be accepted after December 15th.

ENVIR LUMETM

Lighting & Décor for Every Environment

6614 Gant Road Unit B Houston, TX 77066
Envirolume.com 833-655-5LED



ALL RIGHTS RESERVED

The designs included in this catalog are protected by industry property law. This document is not contractual.
Dimensions and other technical data of the products are provided for information purposes only and are subject to change for technical reasons or due to publication errors.
The partial or total reproduction of the contents of this publicatiois is forbidden without the express written authorization of Envirolume.